


HIKVISION How to set up Line Crossing

Line crossing detection or intrusion **detection** is a function of your DVR, NVR or IP camera. What it does is instantly **detect** any motion in a certain "set", set by you. It will send immediate alerts to your smart device directly from the DVR, NVR or IP camera.

To set up Line crossing from the DVR

		<p style="text-align: center;">Go to your monitor</p> <p style="text-align: center;">Right Click the Mouse</p>
		<p style="text-align: center;">Select Common Menu</p>
		<p style="text-align: center;">Select VCA</p>

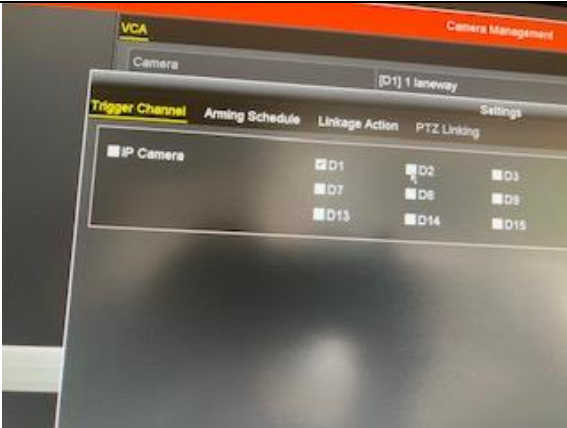


Select the Camera you want the Line Crossing set up on.
In this case its Camera 1 laneway.

Enter the Line crossing Tab

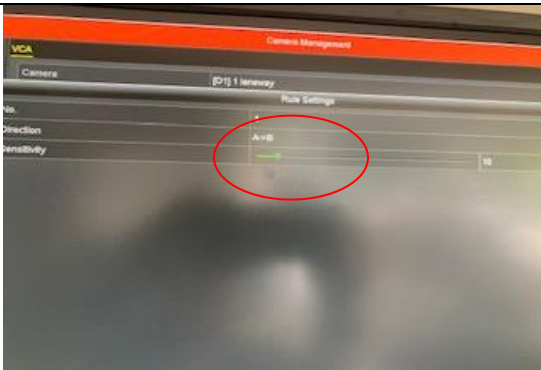
To change the line Crossing 'Rule'
Click on Rule - -Then Draw Line

Click Apply Click OK



Ensure only the required camera is selected in Trigger Channel

Enter the Linkage action for



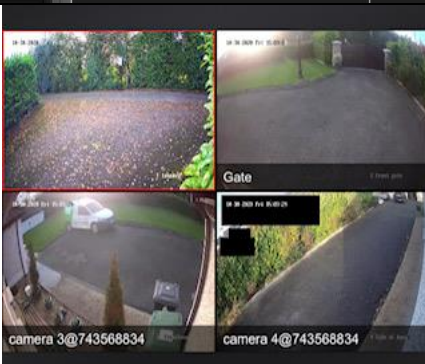
Select the Direction of the Line Crossing

Press Apply

Press OK



Enter camera Linkage for additional options



To Set up Line crossing from your Mobile HIK App

